

**BRIGHT A BLIND**   
CLEANING • MAINTENANCE • REPAIRS • REPLACEMENTS

**BAB PROJECTS**   
INTERNAL AND EXTERNAL SOLAR SHADING



**Qmotion<sup>®</sup>uk**  
advanced shading systems

Automated Wireless Shades  
Commercial

# The NEW solution to automation in window treatments

QMotion UK Advanced Shading Systems specialise in providing window covering solutions to architects, designers and specifiers. QMotion UK offers innovative solutions that will distinguish either your Office, learning centre or public areas.

They will also satisfy both the functional and aesthetic needs of conference centres, presentation & meeting rooms. They can also be used as projection screens or for printed image applications.

The QMotion UK shade solution offers the most unique and sophisticated automated and manual control system in the market. Using patented technology, the QMotion UK shade provides a dual control feature that allows the user to operate the shade electronically and manually, bringing a new level of convenience to shade controls.

QMotion UK shades allow users to close or lower their shades at a touch of a button. Our products have clean, crisp aesthetics, are wire free and are used for a variety of solar applications.

QMotion UK offers industry leading battery life, up to 5 years with on average 4 daily movement changes. In addition, a hard wired (low voltage) power supply is available.

## Easy Battery Replacement

By placing the access port for the batteries in the shade tube wall, you can now change the batteries without having to remove the shade from the brackets. The battery life is up to 5 years, depending on shade size and usage.

## Easy Fabric Removal and Installation

A snap-on spline is attached to the fabric and can be pulled off and snapped on to the shade tube. The spline that attaches the shade to the tube permits the roller shade to be easily removed for cleaning, maintaining and sanitising or replacement of the fabric altogether. Demounting the tubes or brackets for cleaning is unnecessary.

Please ask your QMotion UK Authorised Distributor to show you our full range of fabrics, hardware fascia's and cassette's that are available in a selection of colours for use with the system.



- Completely wireless motorisation - no exposed wires or RF antenna's
- Manual override (blind can be moved by hand without the need for a transmitter)
- Easy three minute set up after installation to provide upper and lower stop positions as well as automatically including three intermediate equal and aligned stop positions
- Powered by standard readily available D cell type batteries giving 5 years operation based on 4 cycles per day normal usage
- Batteries can be changed over easily by anyone as they are contained within the shade hardware itself
- Low Voltage wired shades available as an option complete with manual override
- QMotion UK shades come complete with a five year warranty

## QMotion UK Control Options

Along with the newest and most innovative control technology QMotion UK shades can interface with nearly all Home Automation systems either new or existing within your home. QMotion UK has developed the following accessories to make interfacing as easy as possible.

### Qconnect



Interface communication device to support integration with most home control systems.

- RS-232 / RS-485
- Dry contact interface
- 15 channel
- 9V DC or power over CAT 5
- 15 metre range of signal - further Qconnect's can be added to increase range

### Programmable Timer Remote



Works the same as a single channel 5 button remote plus programmed automated settings.

- 5 year battery life
- Supports 6 events
- Windows PC programmable
- Time of day, days of week, sunrise/sunset settings

### Multi-Channel Remote



Up to 6 individual or group settings plus an "ALL" setting.

- Up to 3 custom presets
- LED feedback
- Motion activated channel indicator

### Qrelay



Improves signal reception where factors effect remote transmission.

- Extends range of all QMotion UK remotes
- Powered from a wall outlet or from a powered USB port
- Two modes of operation

### Qsync

QMotion UK Smartphone Application "App" Features:

- Control QMotion UK shades with iOS devices - Android devices coming soon
- Virtual Shade: Drag your finger to place the shade to the desired positions
- Connects automatically to Wifi\* and Bridge. "Plug and Play"
- Channel System to name, take and set reference photo to group shades
- Step by Step setup for learning, setting lower limit, and deleting shades
- Control nearly 500 shades or groups from each Qsync TCP/IP to 433Mhz bridge\* (Automatic Wifi Connection not available on iOS)



### Remote Wall Station

For the convenience of the user, consider Wall Docking Station.

Available in Single, Double or Triple gang versions, these wall plates are built to install on a wall as a place to retain the transmitters used in a project. Remote controls hold in place on the Docking Station via a strong magnet. Wall plates are flush mounted and do not require routing a hole in drywall or other mounting wall finishes. For places where a remote should be "permanently" attached to a wall, our Wall Station Adaptors mount around the remotes, making them virtually impossible to remove without a screwdriver.

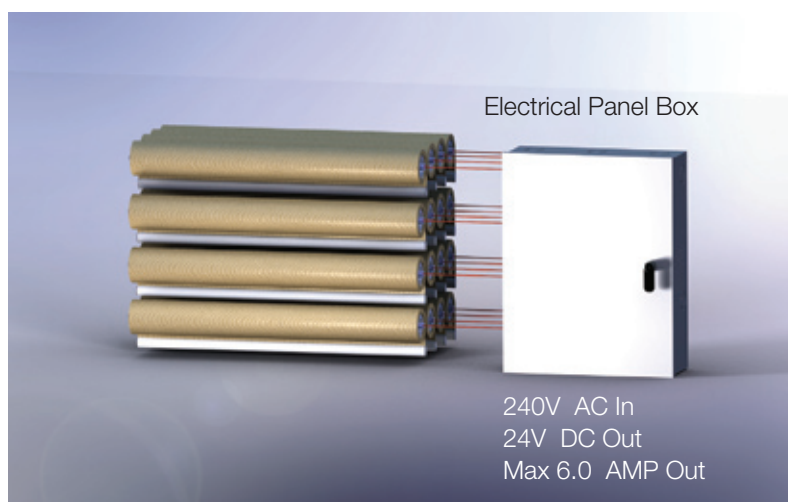




## Low Voltage Power Option

QMotion UK offers a low voltage power option

- Tube is configured to convert low voltage into the proper level to power the shade
- No need to purchase dedicated power supplies with various voltage levels
- Transformer options are available to power one shade or multiple shades
- Each shade comes with a ten inch wire lead
- Includes manual override system
- QMotion UK does not supply the cables from the transformer to the shades



Please note this requires a qualified electrician for installation of mains power supply for shade operation

## Single motor dual shade - Qtandem

Available early 2014

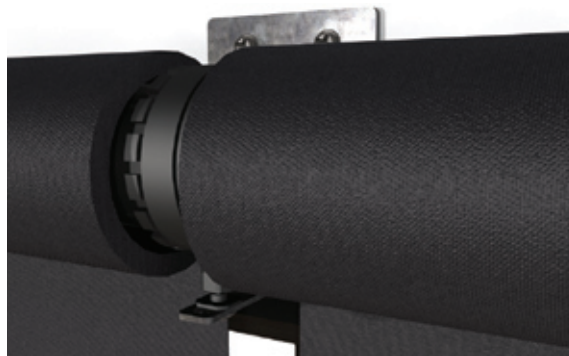
QMotion UK delivers innovation again with dual shade functionality utilising only one motor! QMotion UK shade's unique system allows a solar screen and blackout shade to work independently or in conjunction, with one motor for both shades. This technological breakthrough brings easy controls and efficiency at a better price.



## Linked shades - Qlink

Available early 2014

- Another first is our wireless linked shade system
- Multi-window covering using one motor to drive multiple linked shades (size dependent)
- Manual override facility
- Unique linked shade system supports angles up to 40°



## QMotion UK Printed Shades

In addition to providing glare and heat control, QMotion UK shades are ideal to display logos, special announcements, window signage, and additional display areas.

- |                       |                  |
|-----------------------|------------------|
| • Promotional signage | • Showrooms      |
| • Advertising         | • Scenic designs |
| • Signs and banners   | • Space dividers |
| • Restaurants         | • Exhibits       |



Issue 1 May 2014

1 - 3 North Road, London N7 9HA  
Telephone: 020 7700 6000 Fax: 020 7700 6303 Email: [sales@brightablind.com](mailto:sales@brightablind.com)

**BRIGHT A BLIND**   
CLEANING • MAINTENANCE • REPAIRS • REPLACEMENTS

**BAB PROJECTS**   
INTERNAL AND EXTERNAL SOLAR SHADING

[www.brightablind.com](http://www.brightablind.com)  
[www.babprojects.com](http://www.babprojects.com)